

GREENWICH MANAGEMENT TEAM

Mary Ney
Chief Executive
Room 21 Town Hall

Chris Perry
Deputy to Chief Executive
Room 18 Town Hall

John Comber
Director of
Regeneration
Enterprise & Skills
6th Floor Crown
Buildings
-
Worklessness,
Regeneration,
Economic
Development,
Transportation
Property,

Gillian Palmer
Director of Children's
Services
8th Floor Riverside
House East
-
Schools,
Children's Services,
Early Years,
Youth services,
Connexions,
Adult Learning,
Pathways to
Employment,
Student Awards

Chris Woods
Interim Director of
Neighbourhood
Services
3rd Floor Crown
Building
-
Environment,
Cleansweep,
Waste Management,
Building Services,
Housing/Tenancy
Management,
Repairs & Major
Works,
Community Housing,
Home Ownership,

Harcourt Alleyne
Assistant Chief
Executive (Policy,
Inclusion and
Partnerships)
Room 21 Town Hall
-
Social Inclusion &
Justice,
Policy,
Performance
Management,
Scrutiny,
Partnership,
Greenwich Strategy,
Local Area
Agreement,

John Nawrockyi
Director of Adults &
Older Peoples
Services
2nd Floor Riverside
House East
-
Older People,
Adult Social Care,
Healthier
Communities,
Supported Housing,
Supporting People,

Matthew Norwell
Assistant Chief
Executive
(Community Safety &
Integrated
Enforcement)
-
Safety Enforcement,
Environmental
Health,
Trading Standards,
Licensing,
Home & Road Safety,
Education,
Emergency Planning,
Mortuary

Katrina Delaney
Assistant Chief
Executive
(Communications
and Community
Engagement)
Basement Town Hall
-
Communications,
Press Office,
Events
Print/Graphics,
Greenwich Card,
Web Management,
Community
Engagement,

Shaun Rafferty
Director of Human
Resources and
Organisational
Improvement
4th Floor Riverside
House East
-
Human Resources,
Organisational,
Improvement,
IT-E Gov,

Russell Power
Head of Law &
Governance
5th Floor Riverside
House West
-
Legal,
Committee Services,
Members Services,
Electoral
Registration,

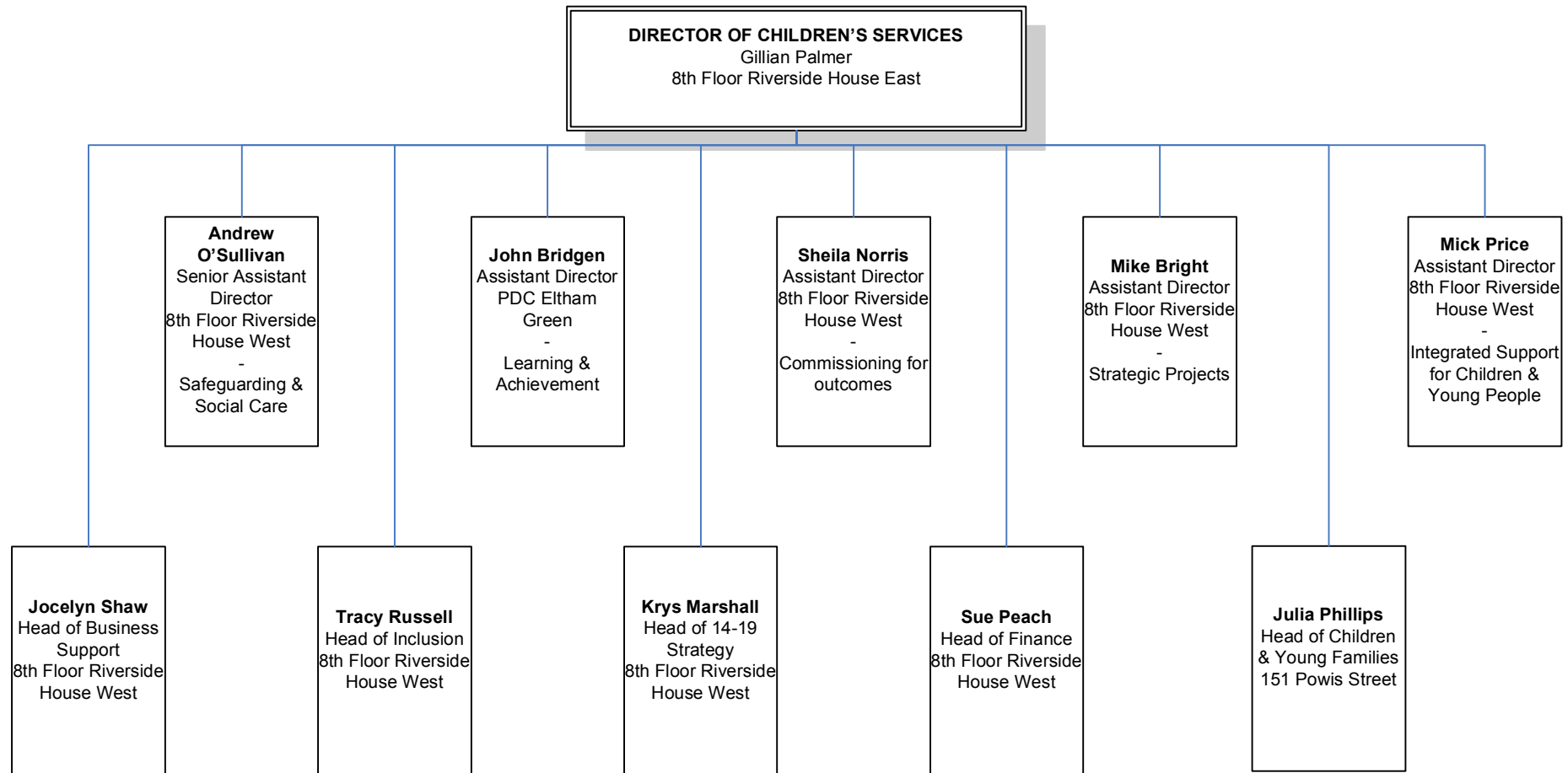
Frances Dolan
Director of Culture &
Community Services
2nd Floor Civic
House
-
Olympics &
Paralympics,
Destination
Greenwich,
Culture, Arts,
Tourism, Sports,
Leisure,
Community Services,
Voluntary Sector
Registrars,
Libraries & Parks

Debbie Warren
Interim Director of
Finance & Customer
Services
3rd Floor Riverside
House East
-
Customer Services,
Financial
Management,
Procurement,
Advice & Benefits,
Revenues,
Risk Management,
Gershon/VFM,
Audit & Anti Fraud,

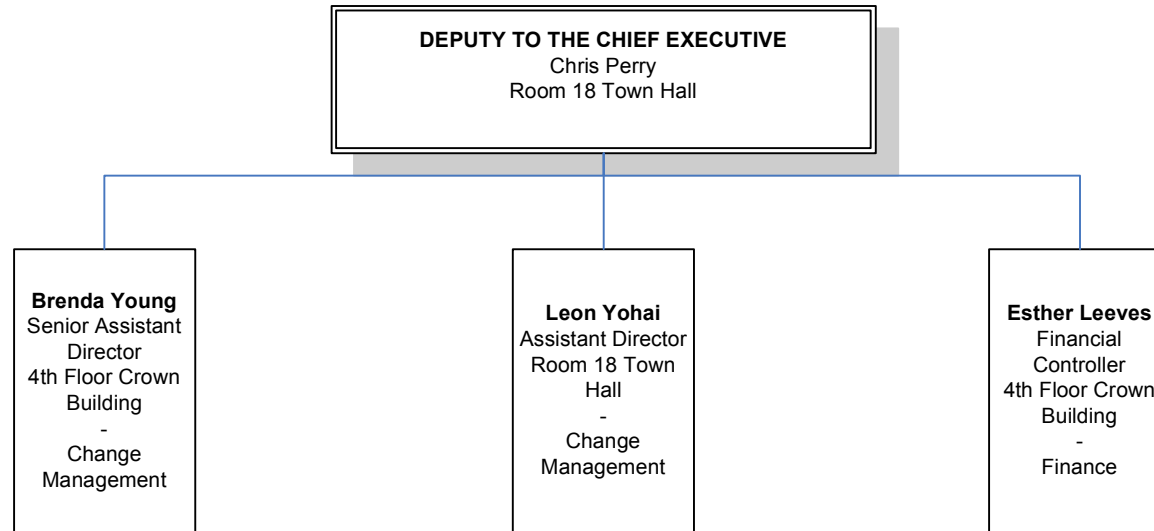
**Gurmel Sing-
Kandola**
Director of Trading
Services
2nd Floor
31 Thomas Street
-
Building Cleaning,
Catering,
Passenger
Transport,
Fleet Management,
Facilities
Management,
Grounds
Maintenance,

Tony Evans
Assistant Chief
Executive
6th Floor Crown
Building

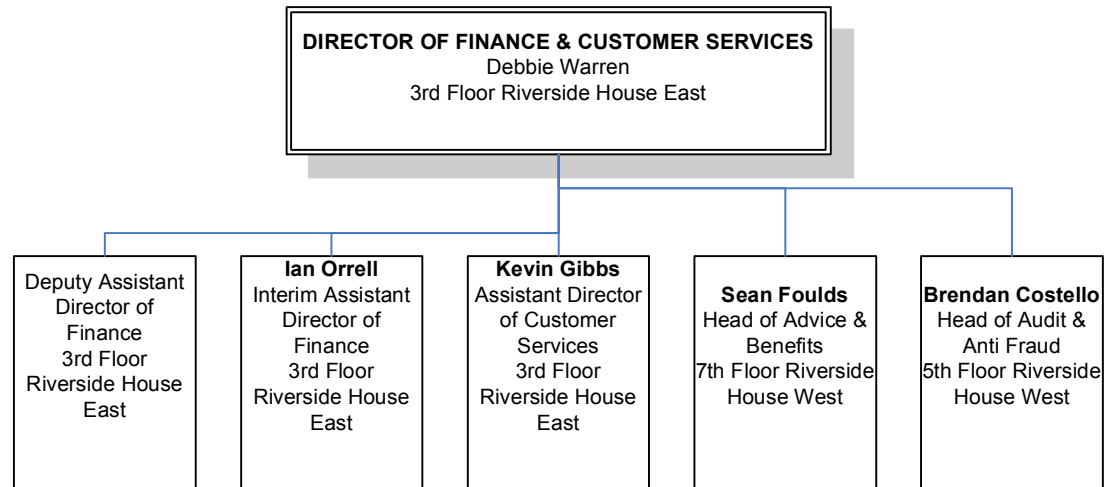
CHILDREN'S SERVICES



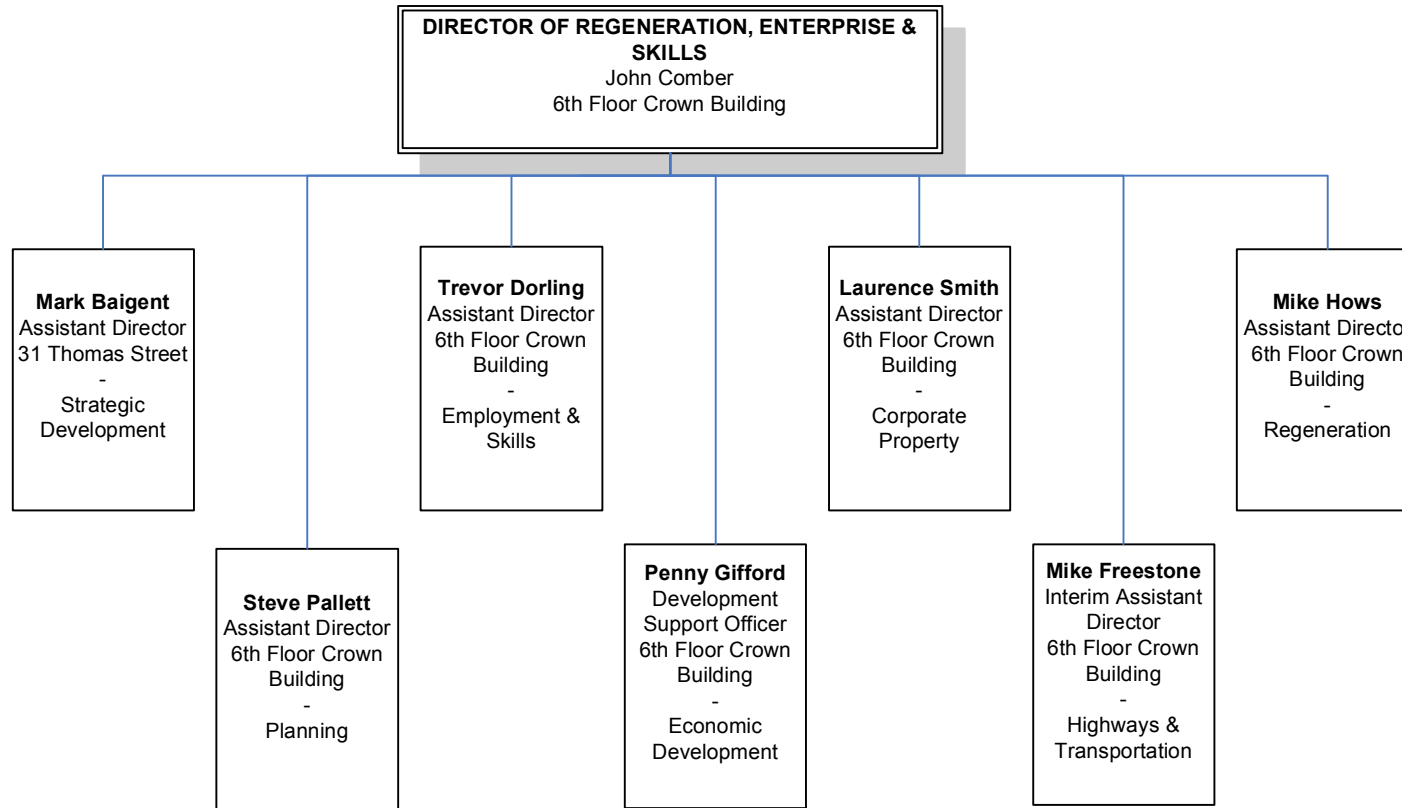
MODERNISATION



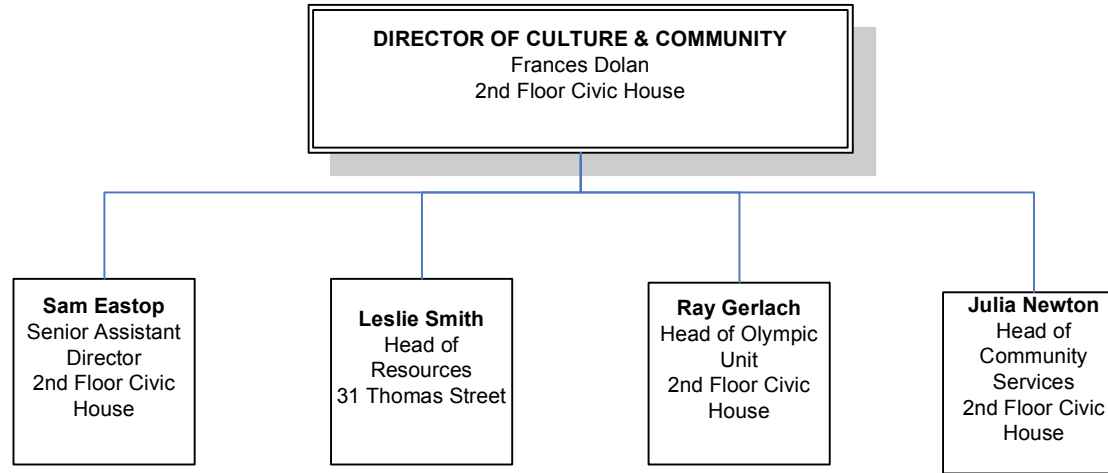
FINANCE & CUSTOMER SERVICES



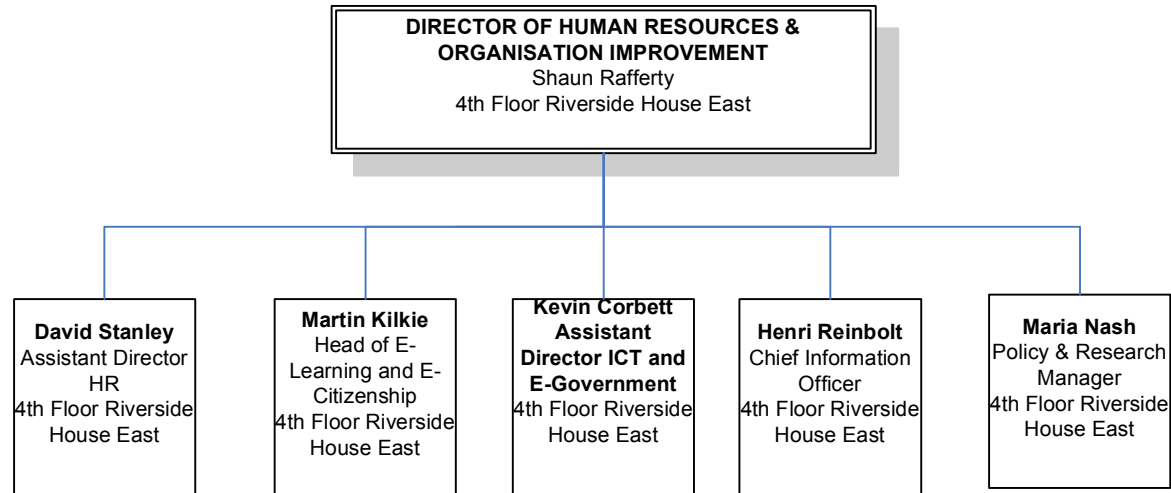
REGENERATION, ENTERPRISE & SKILLS



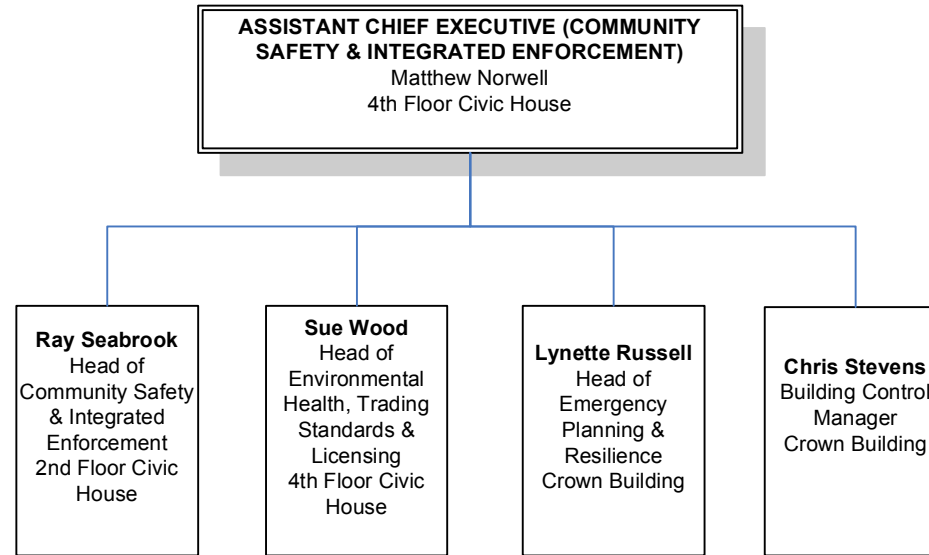
CULTURE & COMMUNITY



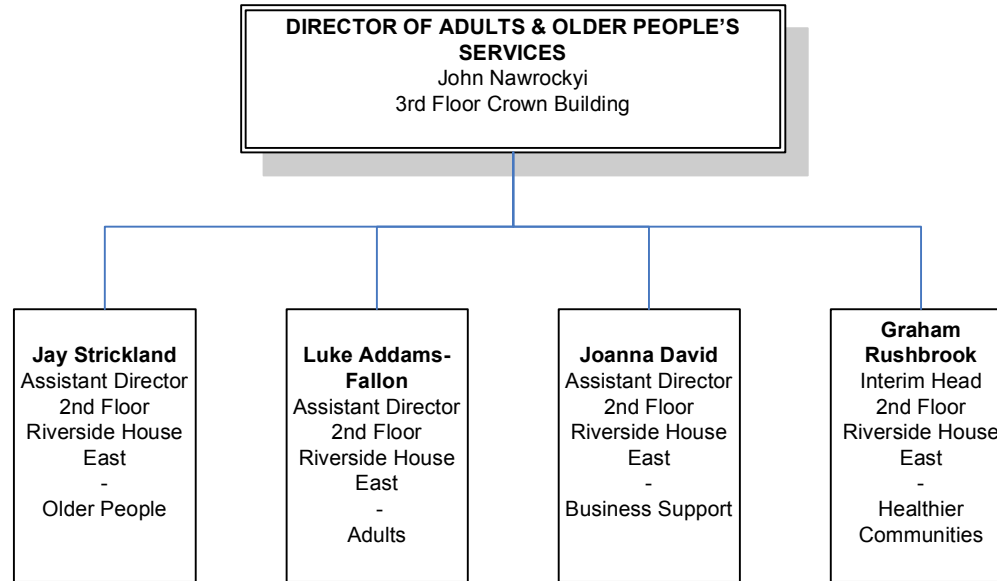
HUMAN RESOURCES & ORGANISATIONAL IMPROVEMENT



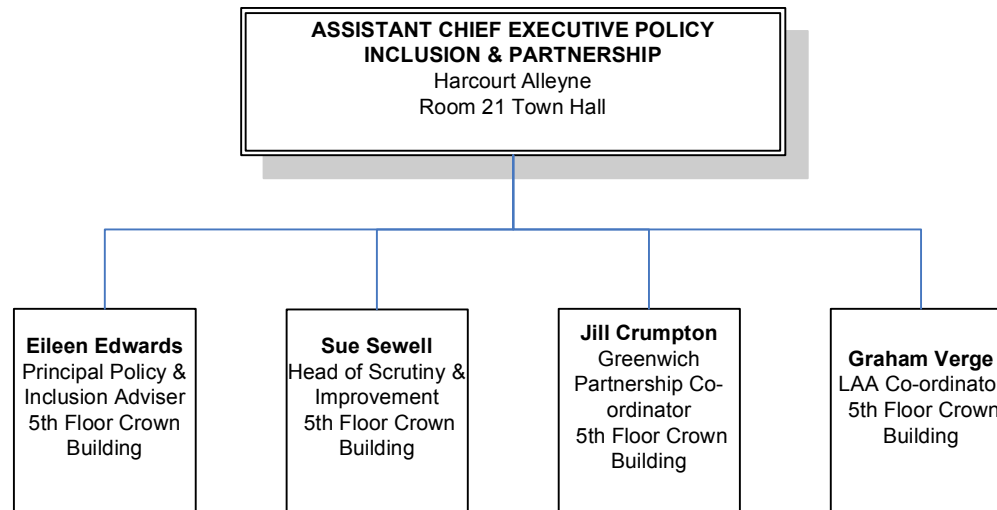
COMMUNITY SAFETY & INTEGRATED ENFORCEMENT



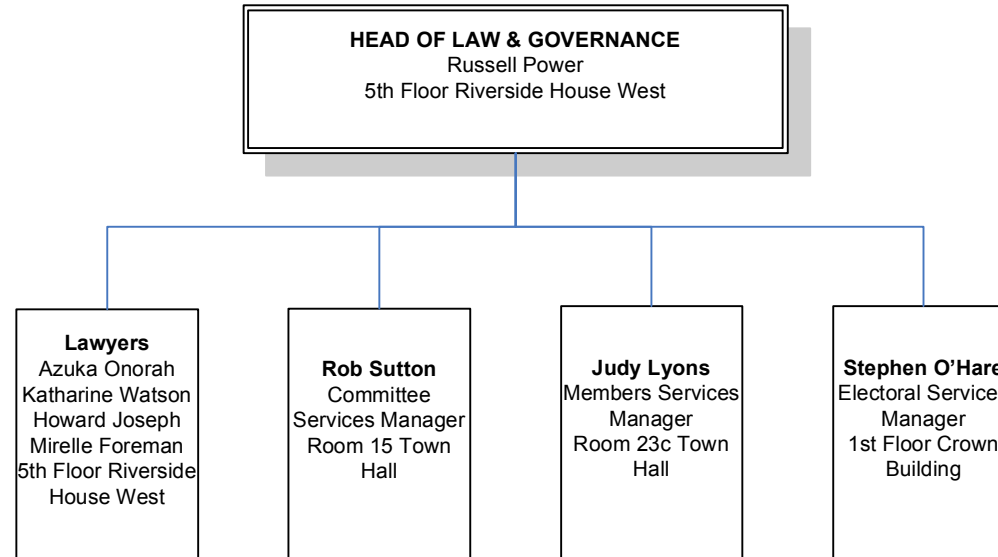
ADULTS & OLDER PEOPLE'S SERVICES



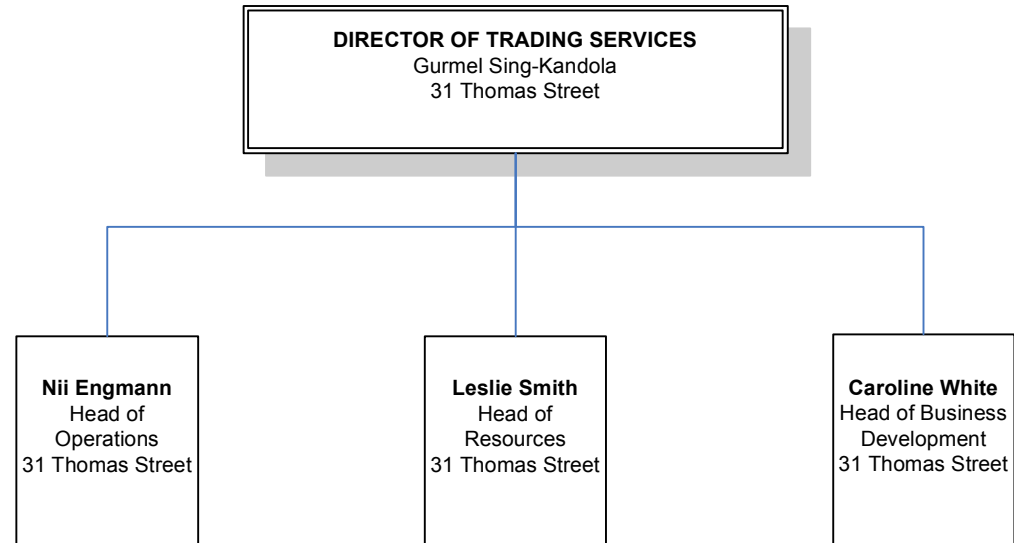
POLICY INCLUSION & PARTNERSHIP



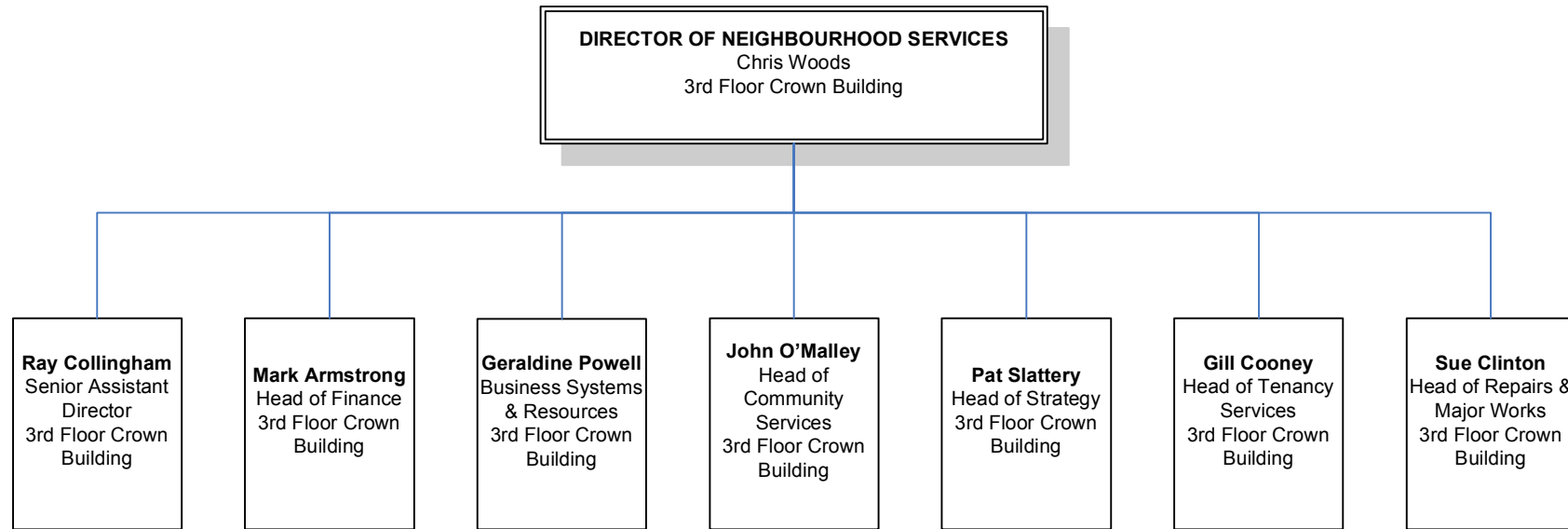
LAW & GOVERNANCE



TRADING SERVICES



NEIGHBOURHOOD SERVICES



COMMUNICATIONS & COMMUNITY ENGAGEMENT

